



# SERGEF Polyclonal Antibody

<b>Catalog No</b>	YP-Ab-16249
<b>Isotype</b>	IgG
<b>Reactivity</b>	Human;Rat;Mouse;
<b>Applications</b>	WB;ELISA;IHC
<b>Gene Name</b>	SERGEF
<b>Protein Name</b>	Secretion-regulating guanine nucleotide exchange factor
<b>Immunogen</b>	The antiserum was produced against synthesized peptide derived from human SERGEF. AA range:179-228
<b>Specificity</b>	SERGEF Polyclonal Antibody detects endogenous levels of SERGEF protein.
<b>Formulation</b>	Liquid in PBS containing 50% glycerol, 0.5% BSA and 0.02% sodium azide.
<b>Source</b>	Polyclonal, Rabbit,IgG
<b>Purification</b>	The antibody was affinity-purified from rabbit antiserum by affinity-chromatography using epitope-specific immunogen.
<b>Dilution</b>	WB 1:500-2000;IHC-p 1:50-300; ELISA 2000-20000
<b>Concentration</b>	1 mg/ml
<b>Purity</b>	≥90%
<b>Storage Stability</b>	-20°C/1 year
<b>Synonyms</b>	SERGEF; DELGEF; GNEFR; Secretion-regulating guanine nucleotide exchange factor; Deafness locus-associated putative guanine nucleotide exchange factor; DelGEF; Guanine nucleotide exchange factor-related protein
<b>Observed Band</b>	50kD
<b>Cell Pathway</b>	Cytoplasm . Nucleus .
<b>Tissue Specificity</b>	Fetal brain,Ovary,
<b>Function</b>	function:Probable guanine nucleotide exchange factor (GEF), which may be involved in the secretion process.,PTM:Phosphorylated upon DNA damage, probably by ATM or ATR.,similarity:Contains 7 RCC1 repeats.,subunit:Interacts with SEC5. The interaction occurs only in the presence of magnesium or manganese and is stimulated by dCTP or GTP.,
<b>Background</b>	function:Probable guanine nucleotide exchange factor (GEF), which may be involved in the secretion process.,PTM:Phosphorylated upon DNA damage, probably by ATM or ATR.,similarity:Contains 7 RCC1 repeats.,subunit:Interacts with SEC5. The interaction occurs only in the presence of magnesium or manganese and is stimulated by dCTP or GTP.,



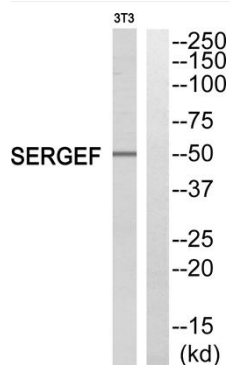
**matters needing attention**

Avoid repeated freezing and thawing!

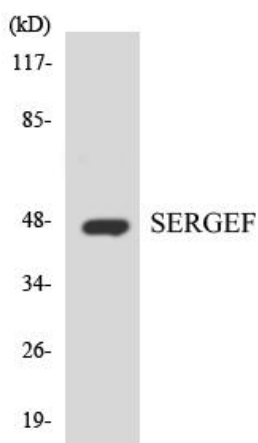
**Usage suggestions**

This product can be used in immunological reaction related experiments. For more information, please consult technical personnel.

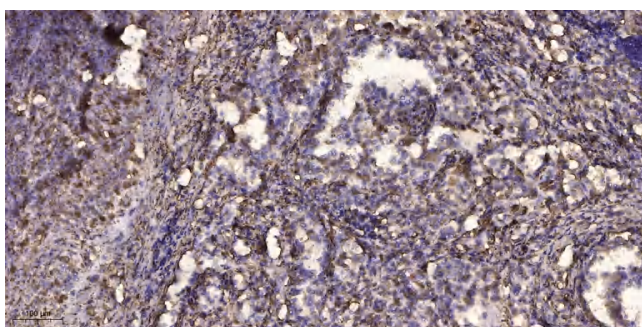
**Products Images**



Western blot analysis of SERGEF Antibody. The lane on the right is blocked with the SERGEF peptide.



Western blot analysis of the lysates from HT-29 cells using SERGEF antibody.



Immunohistochemical analysis of paraffin-embedded human Squamous cell carcinoma of lung. 1, Antibody was diluted at 1:200(4° overnight). 2, Tris-EDTA,pH9.0 was used for antigen retrieval. 3,Secondary antibody was diluted at 1:200(room temperature, 45min).